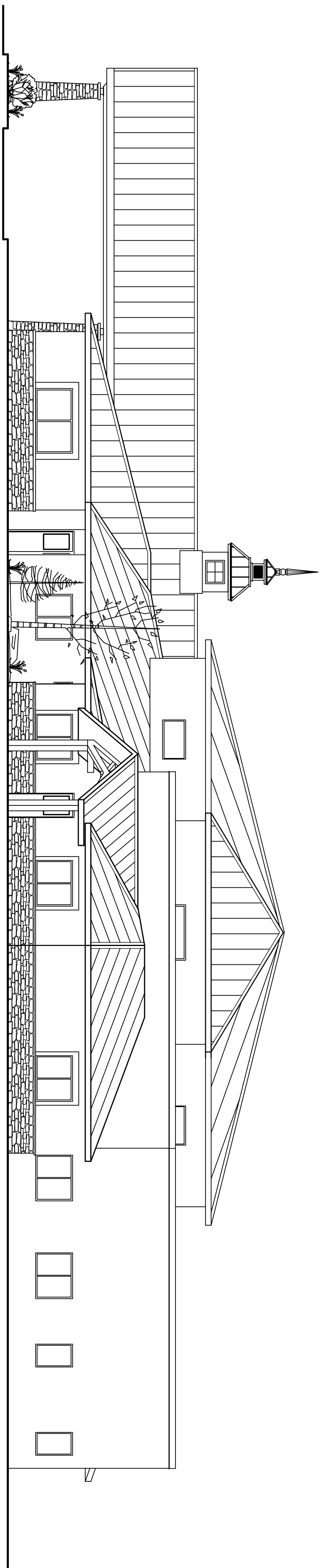
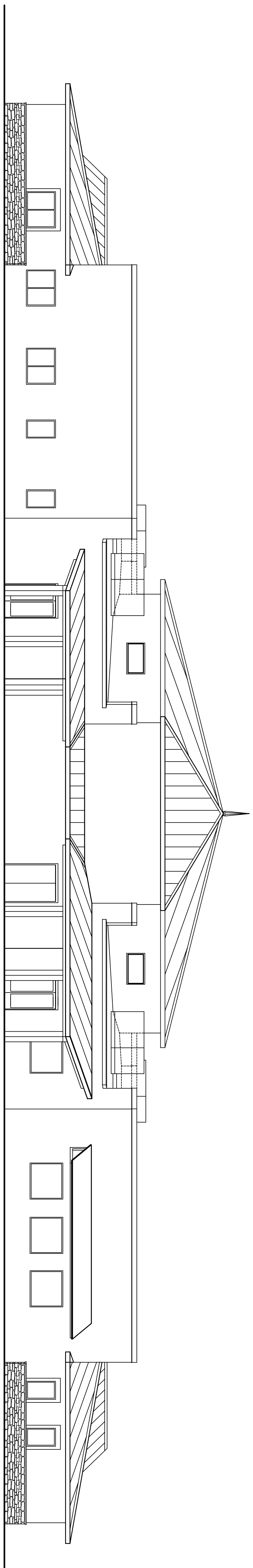


4 S-E ELEVATION - Fellowship Wing
SCALE: 1/8" = 1'-0"

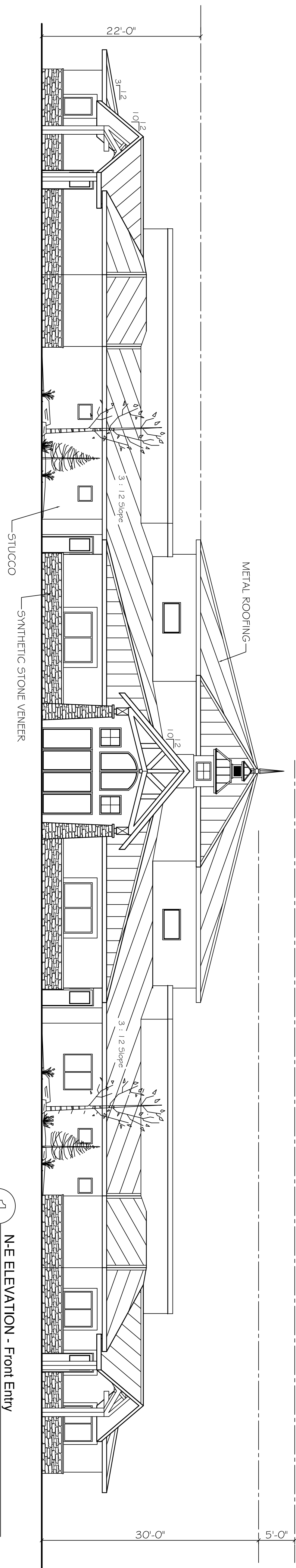
STAMP



3 N-W ELEVATION - Classroom Wing
SCALE: 1/8" = 1'-0"



2 S-W ELEVATION - Rear
SCALE: 1/8" = 1'-0"



1 N-E ELEVATION - Front Entry
SCALE: 1/8" = 1'-0"

Church of Christ

Montrose, Colorado

Contacts:

Contractor

PROJECT NO:
PHASE:
ISSUE & DATE:
DRAWN BY:
CHECKED BY:

Graha
Pill

SHEET NAME

SHEET NUMBER